

SAINT VINCENT COLLEGE FACT BOOK HIGHLIGHTS 2016-2017

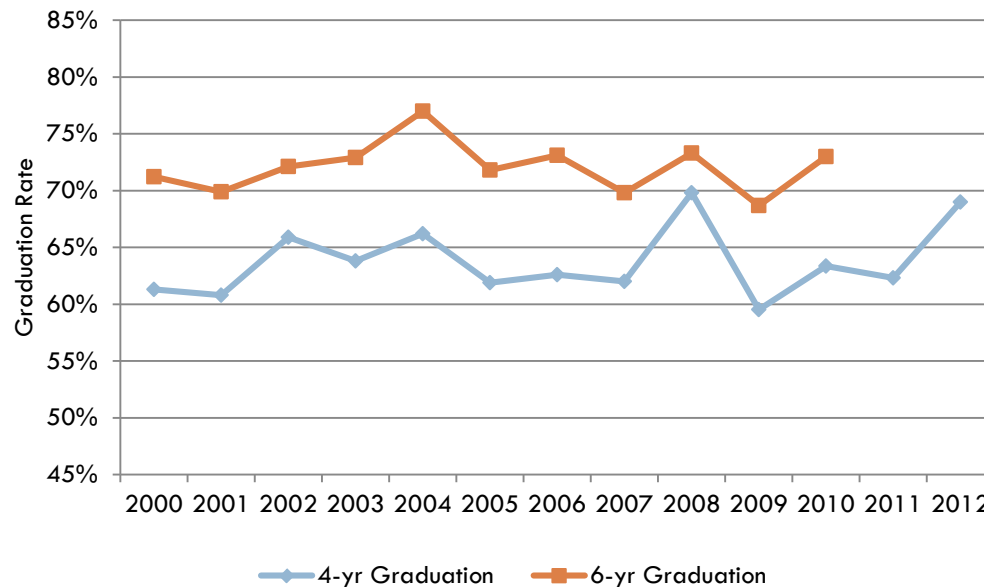
RETENTION

The entering Fall 2015 cohort retention rate at sophomore year is 82.7%. This is based on the number of first-time, full-time students who entered in Fall 2015 and were still enrolled at census date in Fall 2016. The ten-year freshmen-to-sophomore retention rate average is 83.27%

	2006 %	2007 %	2008 %	2009 %	2010 %	2011 %	2012 %	2013 %	2014 %	2015 %
FR to SO Retention Rate	83.6	81.8	85.7	81.0	84.0	80.2	85.0	81.6	87.1	82.7

GRADUATION

Graduation Rates of First-time, First-Year Cohorts (Full-time)



The Fall 2012 first-time, first-year cohort had a four-year graduation rate of 69%.

The Fall 2010 first-time, first-year cohort had a six-year graduation rate of 73%.

From July 1, 2015 to June 30, 2016, the unduplicated headcount of degrees conferred was: 305 at undergraduate level, 77 at the master's level and 12 at the doctoral level.

View Saint Vincent College Post-Graduation Outcomes Survey results:

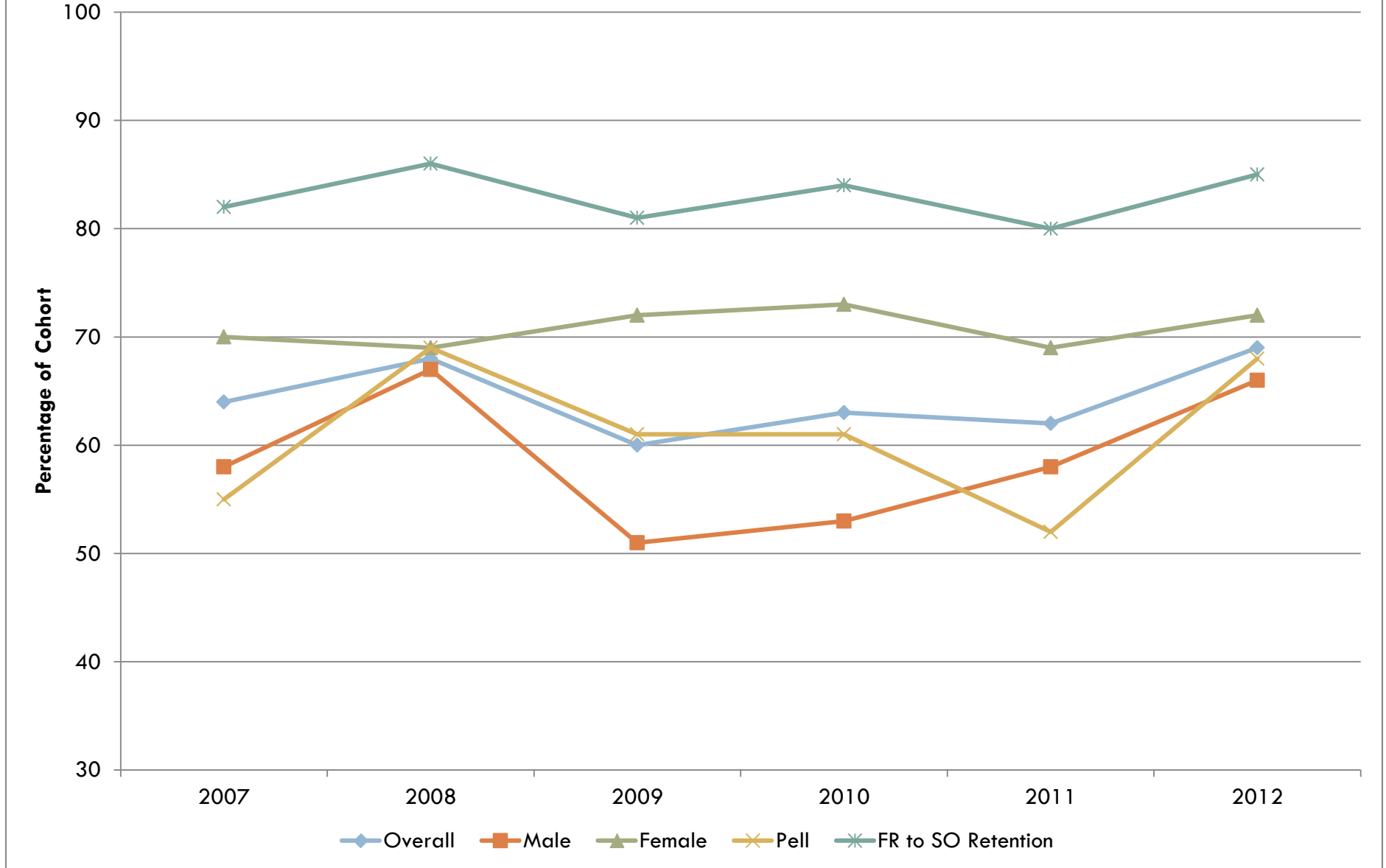
<http://www.stvincent.edu/svcWebsite/about/success-statistics> .

GRADUATION

First-time, First-year Cohort	2005 %	2006 %	2007 %	2008 %	2009 %	2010 %	2011 %	2012 %
4-year Graduation Rate	61.9	62.6	64.0	67.7	59.5	63.4	62.3	68.7
6-year Graduation Rate	71.8	73.1	69.8	73.5	68.7	72.7		

	2007			2008			2009			2010			2011			2012		
	M	F	All	M	F	All	M	F	All	M	F	All	M	F	All	M	F	All
First-time, first-year cohort (N)	223	200	423	251	195	446	249	198	447	222	203	424	243	166	409	173	166	339
4-year Grad Rate %	58%	70%	64%	67%	69%	68%	51%	72%	60%	53%	73%	63%	58%	69%	62%	66%	72%	69%
6-year Grad Rate %	67%	74%	70%	75%	72%	74%	63%	76%	69%	67%	79%	73%						
Pell Grant (N)	57	48	105	57	58	115	54	53	107	72	86	158	77	45	122	59	54	113
4-year Graduation %	47%	65%	55%	68%	71%	69%	57%	64%	61%	50%	71%	61%	42%	73%	52%	66%	70%	68%
6-year Graduation %	58%	71%	64%	79%	76%	77%	67%	68%	67%	63%	77%	71%						

4-year Graduation Rate, First-time, First-year Cohorts



6-year Graduation Rate, First-time, First-year Cohorts

