

SAINT VINCENT COLLEGE FACT BOOK HIGHLIGHTS 2017-2018

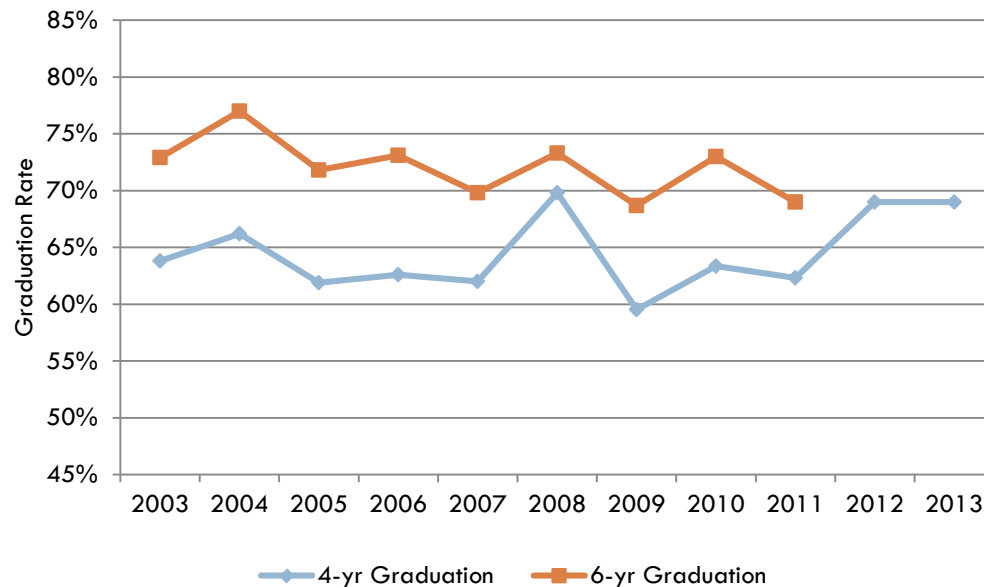
RETENTION

The entering Fall 2016 cohort retention rate at sophomore year is 86.3%. This is based on the number of first-time, full-time students who entered in Fall 2016 and were still enrolled at census date in Fall 2017. The ten-year freshmen-to-sophomore retention rate average is 83.54%

| | 2007 | 2008 | 2009 | 2010 | 2011 | 2012 | 2013 | 2014 | 2015 | 2016 |
|-------------------------|------|------|------|------|------|------|------|------|------|------|
| Fall Cohort | % | % | % | % | % | % | % | % | % | % |
| FR to SO Retention Rate | 81.8 | 85.7 | 81.0 | 84.0 | 80.2 | 85.0 | 81.6 | 87.1 | 82.7 | 86.3 |

GRADUATION

Graduation Rates of First-time, First-Year Cohorts (Full-time)



The Fall 2013 first-time, first-year cohort had a four-year graduation rate of 66%.

The Fall 2011 first-time, first-year cohort had a six-year graduation rate of 69%.

From July 1, 2016 to June 30, 2017, the unduplicated headcount of degrees conferred was: 396 at undergraduate level, 81 at the master's level and 7 at the doctoral level.

View Saint Vincent College Post-Graduation Outcomes Survey results:

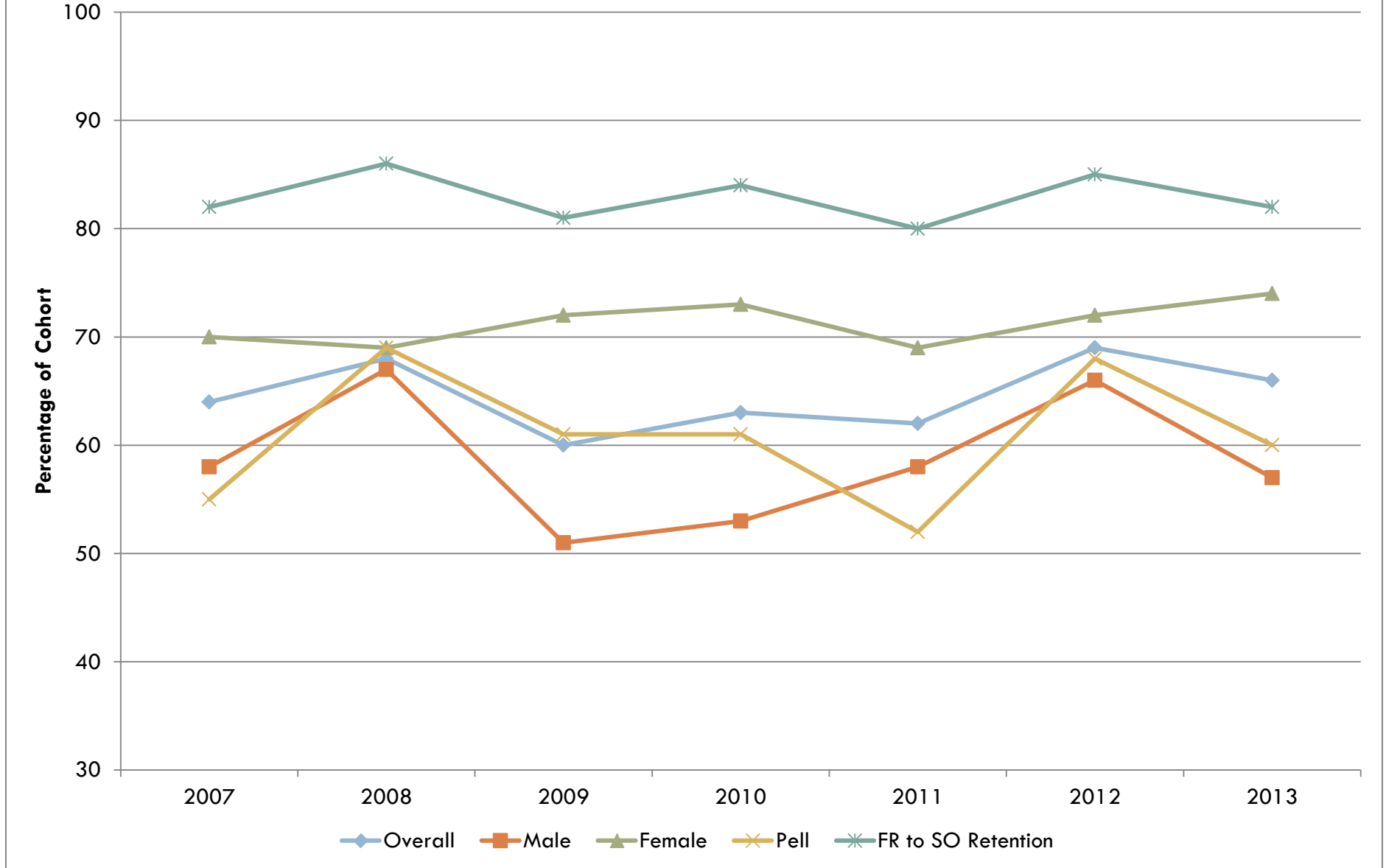
<http://www.stvincent.edu/about/success-statistics> .

GRADUATION

| First-time, First-year Cohort | 2005 % | 2006 % | 2007 % | 2008 % | 2009 % | 2010 % | 2011 % | 2012 % | 2013 % |
|-------------------------------|-----------|-----------|-----------|-----------|-----------|-----------|-----------|-----------|-----------|
| 4-year Graduation Rate | 61.9 | 62.6 | 64.0 | 67.7 | 59.5 | 63.4 | 62.3 | 68.7 | 65.8 |
| 6-year Graduation Rate | 71.8 | 73.1 | 69.8 | 73.5 | 68.7 | 72.7 | 69.2 | | |

| | 2007 | | | 2008 | | | 2009 | | | 2010 | | | 2011 | | | 2012 | | |
|--|------|-----|-----|------|-----|-----|------|-----|-----|------|-----|-----|------|-----|-----|------|-----|-----|
| | M | F | All | M | F | All | M | F | All | M | F | All | M | F | All | M | F | All |
| First-time, first-year cohort (N) | 223 | 200 | 423 | 251 | 195 | 446 | 249 | 198 | 447 | 222 | 203 | 424 | 243 | 166 | 409 | 173 | 166 | 339 |
| 4-year Grad Rate % | 58% | 70% | 64% | 67% | 69% | 68% | 51% | 72% | 60% | 53% | 73% | 63% | 58% | 69% | 62% | 66% | 72% | 69% |
| 6-year Grad Rate % | 67% | 74% | 70% | 75% | 72% | 74% | 63% | 76% | 69% | 67% | 79% | 73% | 65% | 75% | 69% | | | |
| Pell Grant (N) | 57 | 48 | 105 | 57 | 58 | 115 | 54 | 53 | 107 | 72 | 86 | 158 | 77 | 45 | 122 | 59 | 54 | 113 |
| 4-year Graduation % | 47% | 65% | 55% | 68% | 71% | 69% | 57% | 64% | 61% | 50% | 71% | 61% | 42% | 73% | 52% | 66% | 70% | 68% |
| 6-year Graduation % | 58% | 71% | 64% | 79% | 76% | 77% | 67% | 68% | 67% | 63% | 77% | 71% | 53% | 73% | 61% | | | |

4-year Graduation Rate, First-time, First-year Cohorts



6-year Graduation Rate, First-time, First-year Cohorts

